

POTENTIAL OF HALAL TOURISM INDUSTRY IN INCREASING REGIONAL INCOME THROUGH REGIONAL TAX AND RETRIBUTION IN TOJO UNA-UNA REGENCY

Fajar Eko Purnomo Rustan *

Muhammadiyah University of Makassar

fajarekopurnomo23@gmail.com

Muhammad Khaedar Sahib

Muhammadiyah University of Makassar

khaedar.sahib@gmail.com

ABSTRACT

This study aims to identify the potential of the halal tourism industry in the Tojo una una regency, Central Sulawesi Province, Indonesia. The method used is descriptive qualitative method with data collection techniques through surveys, documentation and observations. This study uses spatial analysis and snowball sampling to analyze and collect data on the distribution of accommodation, attractions and tourist attractions at the research location. The results showed that Tojo una-una district had a population of 165,574 people, with a density of 29 people/km² and about 91.22% (151,327 people) embraced Islam based on data from the Ministry of Religion in 2020. For the land area, it is estimated at around 5,721.51 Km² or 8.41 percent of the land area of Central Sulawesi Province. The sea area reaches approximately 3,566.21 Km². With a beach length of approximately 951.115 Km. Tojo Una-Una commonly abbreviated as Touna, which is a land area and a group of islands. This has become a huge potential in shaping the halal island tourism industry in the district. Tojo Una-una with good and professional handling and management, and of course it will become a source of local revenue through local taxes and retribution

Keywords: *Halal Tourism Industry, Local Revenue.*

INTRODUCTION

Consequence from exists rule sharia is the existence of reckoning on eachactivity and deed man asobject law will askedaccountability on wholehis deeds. Thing that asview Islam in hadith Messenger of Allah SAW following this:

لَا تَزُولُ قَدَمَا عِنْدَ يَوْمِ الْقِيَامَةِ حَتَّى يُسْأَلَ عَنْ عُمُرِهِ فِيمَا أَفْنَاهُ وَعَنْ عِلْمِهِ فِيمَا فَعَلَ وَعَنْ مَالِهِ مِنْ أَيْنَ
اِكْتَسَبَهُ وَفِيمَا أَنْفَقَهُ وَعَنْ جِسْمِهِ فِيمَا أَبْلَاهُ

Meaning:

A servant's two soles will not move on the Day of Judgment until he is asked (accounted for) about his age, where he spent it, about his knowledge, how he practiced it, about his



wealth; where did he get it and where did he spend it, and what did he use his body for” (HR. Tirmidhi).

Activities _ economy which no inseparable in Settings economy Sharia(Samsuduha, 2020); (Battour & ishmael, 2016), moment this trend tourist lawful show development positive and Keep going increase (Hamida & Zaki, 2020). Discussion of studies, articles, designs, to promotionsHalal tourism promos are starting to be marketed for interesting stakeholder tour this lawful.

The tourism sector is one sector that has received great attention by the government. This is because the growth rate from 2015-2019 continues to experience positive growth of up to above 50 percent for five years. 1 A number of government performance targets in the tourism sector in the 2020-2024 strategic plan set out through the National Medium Term Development Plan (RPJMN), include among others increase in foreign exchange from 3.3-4.8 billion dollars in 2020 to 21.5-22.9 billion dollars in 2024 and contribution to gross domestic product (GDP) 4.0 percent in 2020 to 4.5 percent in 2020 2024.

Indonesia as a country that is rich in natural beauty, flora and fauna as well as a variety of cultures, can be a sizable source of income in the tourism sector. In general, tourism is seen as a sector that can encourage and increase development activities, create jobs and can increase people's income and local revenue. If managed and developed optimally. Entering the era of globalization, the role of the tourism industry must be supported by qualified and professional human resources so that management governance can achieve the expected results.

The development of the halal tourism industry in Indonesia has been increasing in recent years. This is in line with support from the central government and also several regional governments (Wibowo, 2020).

Tourism development is not possible without the role of the government, especially local governments. Various studies show that local governments as regulators and implementers of policies have a very crucial role in the development and management of tourism. The government needs to coordinate various parties involved in the tourism industry to improve the quality of destinations, accessibility, to the comfort of tourists (Simamora & Sinaga, 2016). Products from halal tourism are popular in many countries, even in countries where the majority are non-Muslims, namely Thailand, Japan, New Zealand, Australia, and others (Anwar, 2020).

The concept of halal tourism has become popular in the international economy, which consists of food and beverage, financial and lifestyle products (Ministry of Tourism, 2019).



Halal tourism in every country is not the same, namely some use the terms Halal Friendly Tourism Destinations, Islamic Tourism, Muslim-Friendly Travel Destinations, Halal Travel, and Halal Lifestyle (Subarkah, 2018). According to tourism experts, this halal tourism is a complementary product to conventional tourism (Sayekti, 2019). Halal tourism in Indonesia has recently been growing rapidly because halal tourism is a sector that is feasible to manage.

Tojo Una-Una Regency makes tourism a leading sector, because Tojo Una-Una Regency has many international quality tours so that it is often visited by domestic and foreign tourists so management is needed in the tourism sector. Tojo Una-Una Regency is one of the districts in Central Sulawesi Province which has a lot of natural tourism potential

Based on the statement contained in the document of the Regional Development Planning, Research and Development Agency (BP4D) of Tojo Una-Una Regency, namely as follows: weak competitiveness of tourism products, low quality of tourism services, unclear focus on tourism development, and weak marketing (Master Plan for Tourism Development) Tojo Una-Una Regency in 2010-2025). In addition to internet accessibility in Tojo Una-Una Regency, which is still low, other aspects of accessibility such as air transportation cannot currently operate because (flight routes have been stopped) by the airline. Where the airline decided to stop flights from or to Tojo Una-Una Regency (Susi Air) .

In the development of tourism in Tojo Una-Una Regency it is still not effective and efficient, bearing in mind that there are still many tourism potentials that are not well known because the accessibility of tourists to go to tourist destinations is still inadequate. The purpose of this study is to analyze the potential of the halal island tourism industry in an effort to increase regional income from regional taxes and fees in the district. Tojo una-una

METHOD

This study uses a qualitative approach. Moleong (2007) Qualitative research uses qualitative methods, namely observation, interviews, or document review. Qualitative research to observe and write about the phenomena that occur and to describe the conditions of halal tourism in Mamasa Regency can be reviewed based on the provisions of the Global Muslim Travel Index (GMTI) there are several indicators that describe conditions and serve as a benchmark for the existence of halal tourism in an area such as: accessibility, communication, environment and service. As well as to support this , an appropriate method is needed in which there are several stages of the process, namely identifying strengths, identifying weaknesses, identifying opportunities and identifying obstacles.

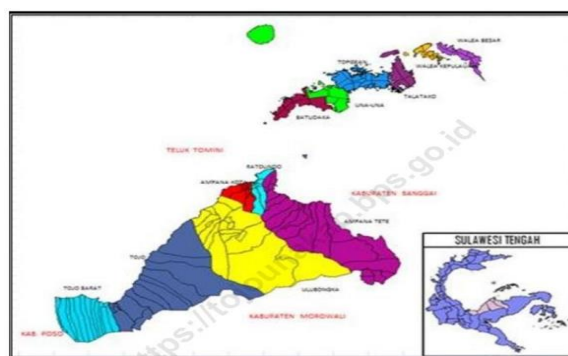


RESULTS AND DISCUSSION

1. Geographical Situation of Tojo One-One Regency

Tojo Una-Una Regency has a geographic area that spans from coordinates 00 06' 56" to 020 06' 41" South Latitude and 1210 05' 25" to 1230 06' 17". However, when viewed from the astronomical location, the estimated length of the Tojo Una-Una Regency area is longitudinal between 1210 05' 25" – 1230 06' 17" E reaches 212 Km, while the width across the coordinator is 00 06' 56" -020 01' 41" LS is estimated to reach a distance of about 89 Km. Based on the position on the surface of the earth and the boundaries of the toritorial area, Tojo Una-Una Regency is located on the coast which is located in the waters of Tomini Bay and other areas including forest areas and mountain valleys. Meanwhile, in the toritorial area, Tojo Una-Una Regency is directly adjacent to other regional boundaries, such as in the North it is directly adjacent to Tomini Bay, Gorontalo Province and North Sulawesi Province, then in the South it is directly adjacent to North Morowali Regency, while to the south East is directly adjacent to Banggai District and to the west is directly adjacent to Poso District .

The territory of Tojo Una-Una Regency consists of land area and island area with a land area of 5,722 km² and sea area of 3,566.21 km² with a coastline of ± 951.115 km. where the land area consists of 6 sub-districts, most of which are coastal areas, namely Tojo District, Tojo Barat District, Ulubongka District, Ampana Kota District, Ampana Tete District and Ratolindo District. Meanwhile, the archipelago consists of 6 sub-districts, including Una - una sub-district, Togeana sub-district, Walea Islands sub-district, Walea Besar sub-district, Batudaka sub-district and Talatako sub-district. Transportation routes in this area also vary, some are by land and sea routes. 6 of the sub-districts use the land route, 6 sub-districts use the sea transportation route to reach the capital city of Tojo Una-Una Regency. The six districts are Una-una, Batudaka, Togeana, Walea Islands, Talatako and Walea Besar. Apart from that, Tojo Una-Una Regency also has a cluster of exotic islands totaling around 81 islands that already have names and 41 of them are inhabited.



Source: tojounaunakab.bps.go.id



2. The condition of the District's Original Revenue. Tojo Una-Una

Based on the District Regulation Tojo Una-Una No. 1 of 2022 concerning the management of Regional Finances article 31 that Regional Original Income includes regional taxes and regional levies. For 2021 the district tax revenue target. Tojo Una-Una Rp. 10,147,700,000 and had undergone changes based on Regional Regulation No. 4 of 2021 in the Summary of Changes to the Kab. Tojo Una-Una to Rp. 11,000,050,000 increased by 8%, namely Rp. 852,350,000. of this target has a realization value of Rp. 11,689,460,708. this illustrates a surplus of Rp. 689,410,708. For regional levies in 2021, the target value has also changed, namely from Rp. 2,710,540,508 to Rp. 2,740,540,508 and a realization of Rp. 3,117,893,341 regional levies also experienced a surplus of 377,352,833 while for this year as of October 2022, from the regional revenue target for Kab. Tojo Una-Una sourced from local taxes is Rp. 11,684,450,000 of which only 67% has been realized, namely Rp. 7,829,595,507 while for those originating from regional fees, the target is Rp. 5,164,774,500 and the realization as of October 2022 is Rp. 3,854,751,126, 75% of the target set in the RAPBD District Government. Tojo Una-Una.

3. Tourist Attractions in Kab. Tojo Una-Una

Table 1. Recreation Tourism Objects in Tojo Una-Una Regency

No	Name	Potency
1	Water Hot	Source Water Hot
2	Cape Fire	Fire Nature, Flora and Fauna endemic
3	Island Malenge	Fauna endemic Macaca Togeanus
4	Cave Old Molangke	Beauty Stalactites and Stalagmite
5	Lake Banano	Mangrove, Crocodile Bird
6	Lake mariona	Jellyfish Color colorful which no itchy
7	Vulcano Mountain Colo	trekking Going to Crater
8	Island Typhoon	Cave Swallow
9	Kakar	Cave Bat
10	Bomba	Cave Bat
11	Baths Malotong	Water, Natural which Experience
12	River Unload	Arum rapids
13	Plains Month	trekking
14	Kulingkinari	Crab walnut



15	Village Kabalutan	Fishing
16	Village Wakai	Craft Shell Pearl
17	Island Three	Beauty View
18	Beach Ampana	Sunset
19	hamlet Lindo	Agrotourism Nautical Grass Sea
20	Village Bomba	Production Sugar Red
21	Village Katupat	PNPM Independent Tourist
22	Village Wakai	PNPM Independent Tourist
23	Village banggi	Production wafers Togean
24	Ue fun	Baths
25	Water Fall Sansarino	Baths
26	Water Fall Weather	Baths
27	Water Toe Falls Branch	Baths
28	Water Fall Kabera	Baths
29	Village Kabalutan	Sea Gypsy
30	Village Kabalutan	Sea Gypsy
31	Matobiai	indigenous People
32	Mosque Old Una-Una	Relics History
33	Grave King Fortress	Relics History
34	Wreck B 24	Relics Lower History Water
35	Grave King Tojo	Relics History
36	Village Siatu	Fishing, Sea Gypsy Sea grass
37	Grave King Tanjumbulu	Relics History

Source: Service Tourist and District Culture Tojo Una-Una

Based on the table above, the tourism potential in Tojo Una-Una Regency there is as much 37 type tour that is consists from tour natural, tour recreation, tour culture and historical tours. And most of these types of tourism take place on the islands there about 60-70% of the potential of the total tourism potential in Tojo Unai Regency Una. Management tourist in Regency Tojo Una-Una During this only on aspectnature tourism and recreational tourism which received attention from the Regional Government so that cultural tourism and historical tourism do not get attention and visits from tourists abroad (tourists) and tourists archipelago (Vishnu).



Behind the popularity of coral reefs, the Togeian Islands have a royal history which was established in 1762 with its capital in Benteng, the first Togeian King was named Sari Kolongian title fruit who reigned in 1762-1791. When the seventh king Zakariah (1896-1899) Reign, company Dutch compel for sign statements submit and submit to the colonial and willing to move the center of the Togeian empire in the Una- Una region. Moving the center of the kingdom, King Zakariah was replaced by Muhammad Marudjeng Dg. Materru (1899-1926), and later, Muhammad Marudjeng Dg. Materru replaced by Lapalege Laborahima and King final in Kingdom Una-Una is Sainudin Lasahido (1946-1950). History of the kingdom in the district. Tojo una- una is inseparable from the history of the development of Islam in the area as evidenced by the existence of the old una-una mosque as part of historical evidence. This is a new attraction for tourists who are interested in exploring Islamic history in the area. The number of tourists is based on data from the Central Statistics Agency for the Regency. Tojo una-una include:

Table 2. Number of Foreign and Domestic Tourists in Kab. Tojo Una-Una 2021

Month	Domestic Travelers	International Tourists
(1)	(2)	(3)
January/ <i>January</i>	691	-
February / <i>February</i>	397	-
March/ <i>March</i>	264	-
April/ <i>April</i>	364	-
May/ <i>May</i>	588	-
June/ <i>June</i>	627	-
July/ <i>July</i>	374	-
August/ <i>August</i>	764	-
September/ <i>September</i>	1229	-
October/ <i>October</i>	915	-
November/ <i>November</i>	988	-
December/ <i>December</i>	772	17
Total	7,973	17

Source: tojounaunakab.bps.go.id

4. Demographics of the Majority Muslim Population

Demographics are statistical data concerning population based on classification in an area. Province population demographics. Central Sulawesi itself has a population demographic based on religion, with the majority being Muslim. The population of West Sulawesi based on religion can be seen in the following table:



Table 3. Percentage of the Province's Population. Central Sulawesi Based on Religion

Regency/City	Islam	Protestant	Buddha	Catholic	Hindu	Amount
proud	77.6%	13.0%	0.8%	1.6%	7.0%	100.0%
Proud Islands	54.6%	41.1%	0.0%	4.3%	0.1%	100.0%
Proud Sea	85.0%	11.0%	0.0%	4.1%	0.0%	100.0%
Parigi Moutong	77.0%	5.1%	0.1%	1.4%	16.4%	100.0%
Morowali	91.8%	4.7%	1.2%	0.0%	2.2%	100.0%
North Morowali	52.8%	39.6%	0.2%	5.2%	2.2%	100.0%
Donggala	89.9%	5.9%	0.1%	0.5%	3.6%	100.0%
sigi	64.8%	34.7%	0.0%	0.3%	0.2%	100.0%
I pose	33.6%	59.4%	0.0%	1.4%	5.6%	100.0%
Tojo One One	91.2%	7.0%	0.2%	1.2%	0.4%	100.0%
Toli-toli	87.9%	7.5%	1.6%	1.8%	1.3%	100.0%
Bull	92.1%	5.6%	1.0%	1.0%	0.3%	100.0%
Hammer	82.8%	9.4%	3.5%	2.2%	2.0%	100.0%

Based on the research findings, it can be seen that demographically Central Sulawesi is a province with a predominantly Muslim population structure with a rate of 76%. Where from 13 regencies/cities in Prov. Central Sulawesi all have a Muslim population percentage above 50% and only Poso Regency itself has a majority Christian population, namely 59.4% for Protestants and 1.4% for Catholics. It can be concluded that the potential for Muslim tourists in 13 districts/cities in Central Sulawesi as tourism targets for Tojo Una-Una Regency is very large.

5. Halal Tourism Conditions in Tojo Una-Una Regency seen from the Global Muslim Travel Index Indicator

a. Accessibility

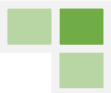
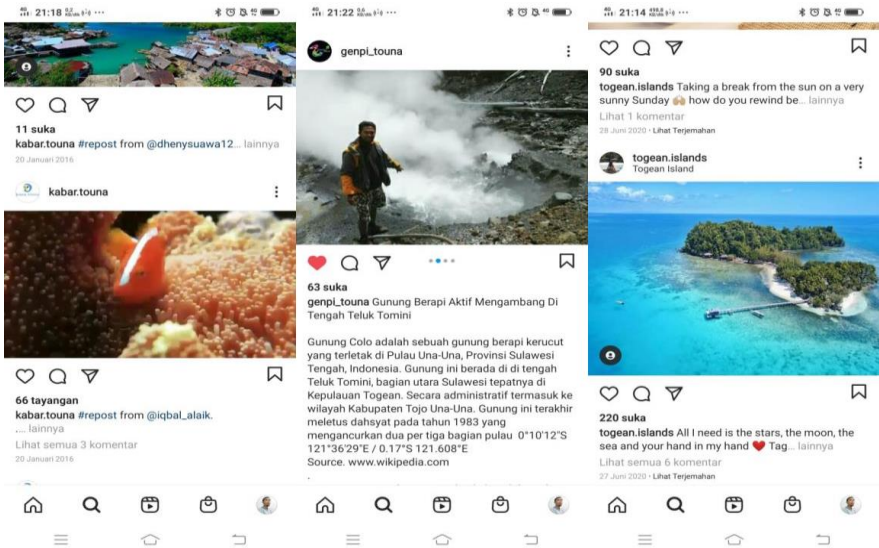
Accessibility is the level of convenience to reach a goal and connect it with other goals. Accessibility consists of facilities such as modes of transportation and facilities such as roads. Based on research observations, it can be assessed that road access and modes of transportation to Tojo Una-Una Regency are adequate. For sea access by ferry with the Gorontalo- Ampana (PP) route, the Gorontalo-Wakai (PP) route and the Ampana-Wakai (PP) route. And there are also Ampana-Wakai (PP) fast boats and Pelra Ampana-Wakai (PP) types of boats. Transportation by air can be reached since November 25 2020 with the Makassar-Ampana (PP) flight route with a travel time of \pm 1 hour 45 minutes, but for now it is due to the lack of public interest in using air transportation which has temporarily resulted in Tanjung Api Ampana airport not operating. Apart from going by air and sea, you



can also go by land using Travel, Buses and Private Vehicles with the Palu-Ampana (PP) route, the Makassar - Ampana (PP) route and the Luwuk-Ampana (PP) route. In terms of the existing facilities in the Travel and Bus vehicles, they do not meet the standards. This is in line with what was conveyed by Mr. Muhammad Ikbal as a Business Actor, that: the lack of vehicle facilities must be prepared, there are vehicles with air conditioning and some that are not specifically for travel vehicles, most of the travel vehicles do not yet have plugs and TVs available . Tourists who visit are faced with two accessibility problems, namely the ease of reaching destinations and movement within destinations. From Wakai, tourists use small boats to reach other tourist attractions. Regarding transportation, tourists are often faced with the constraints of not having a frequency of departures every day, uncertain information and departure schedules, and transportation facilities that have not provided comfortable travel for tourists going to tourist destinations. The problem of transportation accessibility above is caused by the underdeveloped tourist transportation business both by the private sector and the community, as already exists in advanced tourist destinations. Accessibility problems can be overcome by developing a tourist transportation system that satisfies tourists.

b. Communications

Communication in the field of tourism is a way for a tourist destination to communicate an object and tourist attraction to the public or its target market, in this case tourists. A tourist in determining a tourist destination requires information and promotional services that can provide an overview so that they can choose a location as a tourist travel destination. Tourism communication efforts in Tojo Una-Una Regency are carried out by utilizing digital media by private parties and individuals.



The availability of access to information based on digital aspects is urgently needed in the current era to increase the number of tourist visits for tourism development in Tojo Una-Una Regency and to be able to compete with other developed tourist areas in Indonesia. This is in line with the results of an interview with the Head of the Tojo Una-Una Regency Tourism and Culture Office, Mr. Asrin. W. Soga, S.Pdi, M.AP that: The availability of online-based information is currently still not optimally available, such as in Bali, NTB, Banyuwangi and other areas that have used these online information facilities, but the tips we are currently doing namely setting up TIS facilities offline at the port. He also said that from an online - based information aspect it needs to be prepared.

c. Service

Service is all forms of meeting the needs of tourists at a tourist attraction. The availability of basic needs services will have an impact on a person's choice to determine the purpose of his trip, as conversely the limitations of various services, especially services that are very basic for tourists, can discourage tourists from making a trip. For Muslim tourists, the availability of special services such as Muslim-friendly lodging and restaurants with halal standards as well as prayer facilities (mosques) will affect the chosen tour. Regarding the condition of tourism services in Tojo Una-Una Regency, there is no need to worry because the majority of the population in the area are Muslims so access to halal restaurants is not difficult. Likewise with lodging such as hotels and resorts with a sufficient number, especially around island tourist sites and also for places of worship (mosques) which are quite famous and have become one of the tourist spots on Una-Una Island as well as being a historical heritage of the Una-Una kingdom. The only thing that is lacking for the island areas in Tojo Una-Una Regency is the uneven access to clean water. There are still areas in the Togeian sub-district that experience a shortage of clean water.

d. Environment

Environment is one aspect that becomes a factor for a tourist to determine a tour. A clean and comfortable environment is certainly an environment that is considered by tourists to strengthen their choice to visit a place. Therefore every tour that does not pay attention to the environment will have an impact on the number of visitors who come to the tour. Based on research observations, it can be seen that coastal tourist areas, especially in the Togeian Island area and around it, are getting attention from BTNKT because the area's status has become a National Park which is a protected area that needs to be looked after. Even though



there are still several spots where there are still piles of garbage, the BTNKT continues to move and socialize to local residents and visitors to maintain cleanliness.

6. Implementation of Halal Tourism Strategy in Tojo Una-Una Regency

Table 4 SWOT Analysis Matrix

<p>Analysis Environment Internal</p> <p>Analysis Environment External</p>	<p>Strength (S)</p> <p>a. Tojo Una-Una Regency have various kinds of wealth tourism like travel nature, history, culture, attached to religious values</p> <p>b. Lots of institutions community in the field marketing tourist.</p> <p>c. Tojo Una-Una Regency have a location strategic.</p> <p>d. Tourism is one of the Visions and Mission from Regent and vice-regent Regency Tojo Una-Una.</p>	<p>Weakness (W)</p> <p>a. Internal funding limitations development tourist in Regency Tojo Una-Una.</p> <p>b. Lack of service or additional facilities such as places of worship in the Regency Tojo Una-Una especially in island areas.</p> <p>c. Still low quality Resource Man.</p> <p>d. There is still a lack of inter-collaboration academics, private, Public government and media.</p> <p>e. Lack of innovation/new ideas in framework development tourist.</p>
<p>Opportunity (O)</p> <p>a. Natural beauty and diversity culture.</p> <p>b. Technological advances rapidly.</p> <p>c. The convenience- the convenience is given by government for perpetrators especially in business around Tojo Regency Una-Una.</p> <p>d. Needs Public related to tourism has increased after going through the tiring times of the covid 19 pandemic</p>	<p>Strategy SO</p> <p>a. Notice maintenance of object tour.</p> <p>b. Increase technology utilization for development and tourism promotion.</p> <p>c. Increasing the role of institutions community in the field tourism and environment</p> <p>d. Increase cooperation between area neighbors, provinces and centers related to tourism development.</p>	<p>Strategy WO</p> <p>a. Increase the budget on appropriate tourism sector needs tourists.</p> <p>b. Improve facilities prepared additions Government Area. especially with regard to accessibility</p> <p>c. Improving the quality of human resources in Department of Tourism and Culture related to tourism development innovation</p>
<p>Threat (T)</p> <p>a. Unequal access network Internet.</p> <p>b. damage will occur environment and away from local wisdom values</p> <p>c. Object development tours in other areas thus increasing competition.</p> <p>d. Lack of awareness and sense of responsibility from related communities potential development tourism in the District Tojo Una-Una.</p>	<p>Strategy st</p> <p>a. Develop long-term plans to anticipate damage l environment.</p> <p>b. Creating tourism _ safe and comfortable and has advantages</p> <p>c. Conduct outreach regarding preservation __ environment and values wisdom local.</p>	<p>Strategy WT</p> <p>a. Quality improvement and quantity of human resources in the field tourist that adapts to industrial developments</p> <p>b. Program upgrade and activity which involve the community in the framework push community participation.</p> <p>c. Increase collaboration between academics, private, Public government and media in potential development tourist in Regency Tojo Una-Una.</p>



CONCLUSIONS AND RECOMMENDATIONS

The development of halal island tourism potential in Tojo Una-Una Regency can still be developed optimally. It can be seen that there are still various kinds of deficiencies such as in carrying out the development of accessibility that has not been maximized. From the aspect of communication, it is felt that it is still lacking, especially from the government itself in socializing all tourist objects in the district. Tojo una-una based on industrial development. From the service aspect related to the basic needs of tourists, especially those who are Muslim such as restaurants/eateries and resorts/hotels that are friendly to the Muslim community, they are considered sufficient, but the provision of clean water is still uneven, especially in the Togean island area. And for the environmental aspect, it should be ensured that it continues to be maintained, considering that the island tourism area in the Togean region is a national park.

The strategy for realizing the potential development of halal island tourism in Tojo Una-Una Regency uses the SWOT analysis proposed by Rangkuti (2004). The matters in question are as follows:

1. Strength (S)
 - a. Tojo Una-Una Regency have various kinds of wealth tourism like travel nature, history, culture, attached to religious values
 - b. Lots of institutions community in the field marketing tourist.
 - c. Tojo Una-Una Regency have a location strategic.
 - d. Tourism is one of the Visions and Mission from Regent and vice-regent Regency Tojo Una-Una.
2. Weakness (W)
 - a. Internal funding limitations development tourist in Regency Tojo Una-Una.
 - b. Lack of service or additional facilities such as places of worship in the Regency Tojo Una-Una especially in island areas .
 - c. Still low quality Resource Man.
 - d. There is still a lack of inter-collaboration academics, private, Public, government and media.
 - e. Lack of innovation/new ideas in framework development tourist.
3. Opportunity (O)
 - a. Natural beauty and diversity culture.
 - b. Technological advances rapidly.



- c. The convenience- the convenience is given by government for perpetrators especially in business around Tojo RegencyUna-Una.
 - d. Needs Public related to tourismhas increased after going through the tiring times of the covid 19 pandemic
4. Threat (T)
- a. Unequal accessnetwork Internet.
 - b. damage will occurenvironment and away from local wisdom values
 - c. Object development tours in other areas thus increasingcompetition.
 - d. Lack of awareness and sense of responsibility from related communities potential development tourism in the DistrictTojo Una-Una.

REFERENCES

- Atapunang, R. (2019). *Wings Air Closes Palu-Ampana Flight Route, Transportation Agency Reacts* Accessed from <https://telegrafnews.co/2019/10/wings-air-Tutup-rute-penerbangan-palu-ampana-dishub-reaksi.html>.
- Bryson, JM (2004). What to do when stakeholders matter: stakeholder identification and analysis techniques. *Public management review* , 6 (1).
- Fletcher, J., Fyall, A., Gilbert, D., & Wanhill, S. (2017). *Tourism: Principles and practice*. London: Pearson UK.
- Nagari, M. P., & Pangestuti, E. (2019). Role Digital Tourism in DevelopmentVillage Tour Jodipan. *Journal of Business Administration* , 74 (1).
- Rangkuti, F. (2004). *Analysis SWOT technique Dissect case business* . Jakarta. GramediaReferences play.
- Simangunsong , F. (2017). *Methodology Study Government* . Bandung. Alphabets.
- sunaryo, B. (2013). *Policy Development Destinations Tourist Draft and the applicationin Indonesia*. Yogyakarta. Graha Media.
- Suwantoro, G. (2002). *Tourism Area Objects and Attractions*. Yogyakarta: Andi. Regulation Minister Tourist Republic Indonesia Number 10 Year 2018 About Service Regulation Government Republic Indonesia Number 50 Year 2011 About Plan ParentDevelopment National Tourism Year 2010-2025.
- Tojo Una-Una District Tourism Development Master Plan 2010-2025. Plan Strategic Service Tourist and Culture Regency Tojo Una-Una year 2016-2021.



Law of the Republic of Indonesia Number 10 of 2009 concerning Tourism. Constitution
Republic Indonesia Number 23 Year 2014 About Government Area.

Warmayana, IGAK (2018). Utilization of digital marketing in tourism promotion in the
industrial era 4.0. *Cultural Tourism: Scientific Journal of Religion and Culture* , 3 (2).

Wellem, Q (2009). Semantics web As Solution Problem In E-Tourism In Indonesia. in *Seminar
National Application Technology Information (SNATI)* .

